



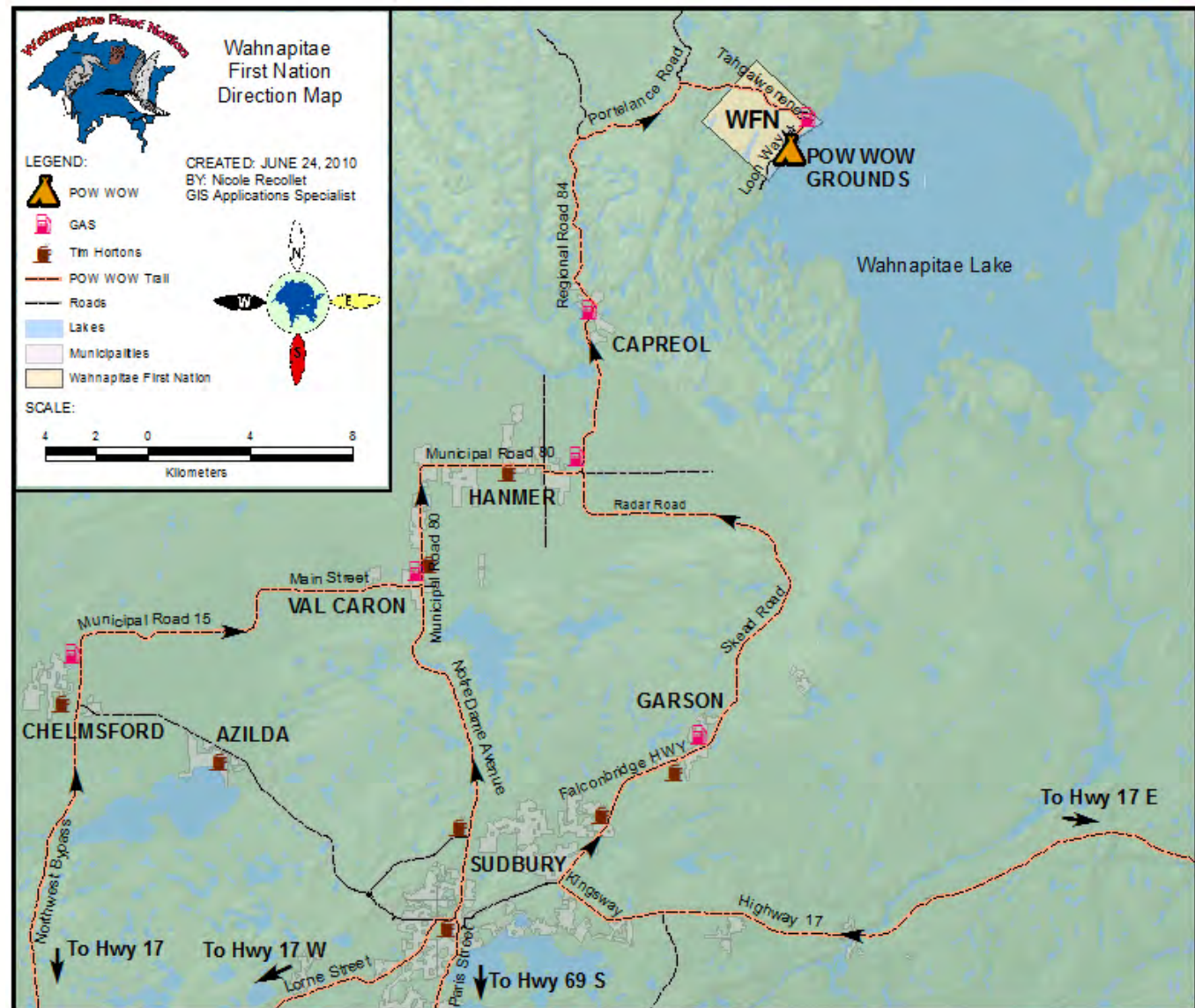
Indigenous Mapping  
Workshop  
July 2015  
Waterloo, Ontario



## Using GIS to Inform First Nation Decision Making

Nicole Recollet - Geospatial Analyst  
Stefanie Recollet - Resource Development  
Analyst

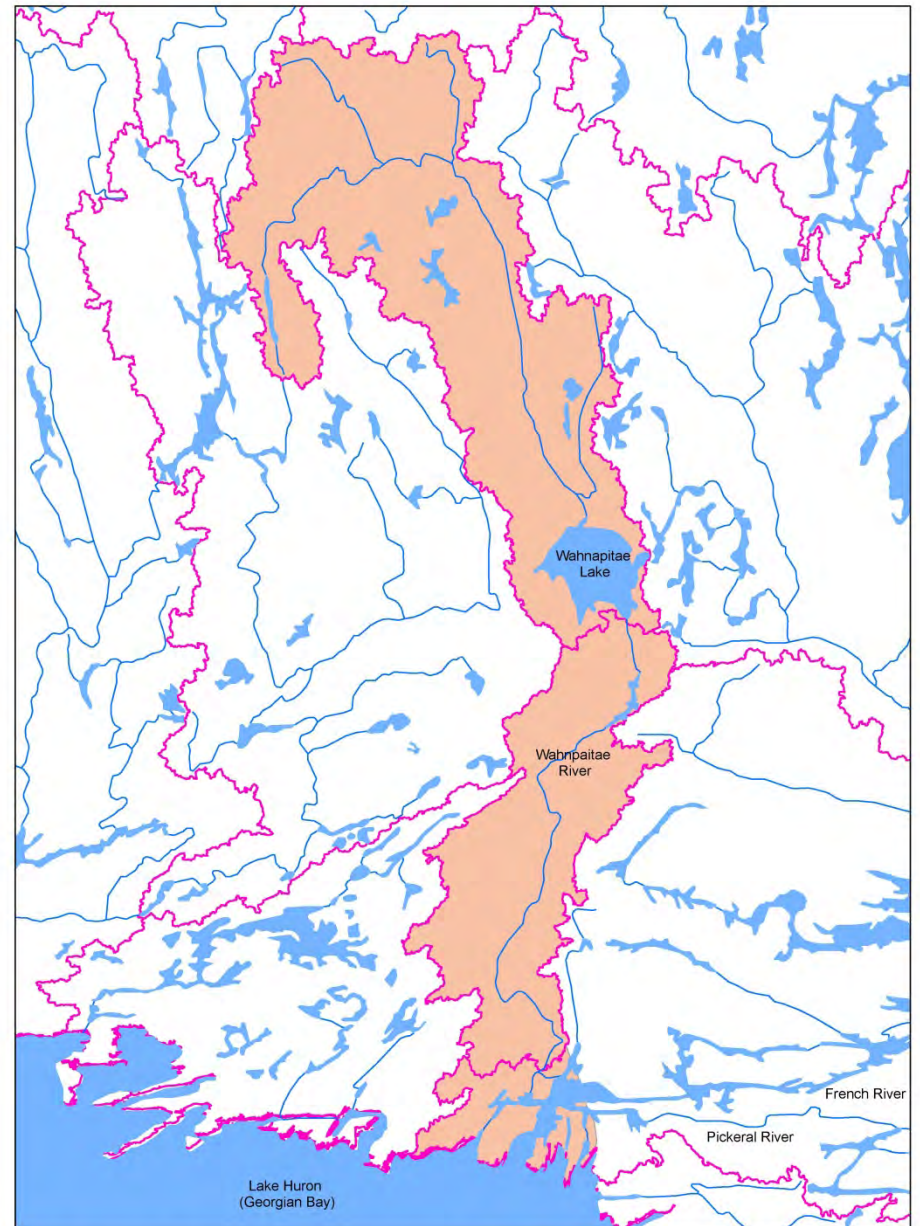
# Who are We?





# Territory

## Stewardship Area- Wahnapiitae Watershed



**TITLE:**  
Wahnapiitae First Nation  
Land Development  
WFN-LD-2010-021  
Traditional Use Area  
Map

**LEGEND:**  
Waterbody\_Canada  
River\_Canada  
Watershed  
TraditionalUseArea

**SOURCES OF INFORMATION:** **DATE:**  
Datum: NAD83 Zone 17  
Data Sources:  
MNR - Watershed  
OBM - Hydrology

DRAFT - October 20, 2010

**PRODUCED BY:**  
Nicole Recollet,  
GIS Application Specialist

**SCALE:**  
10 5 0 10  
Kilometers



# Procedural Manual:



WAHNAPI  
FIRST  
NATION

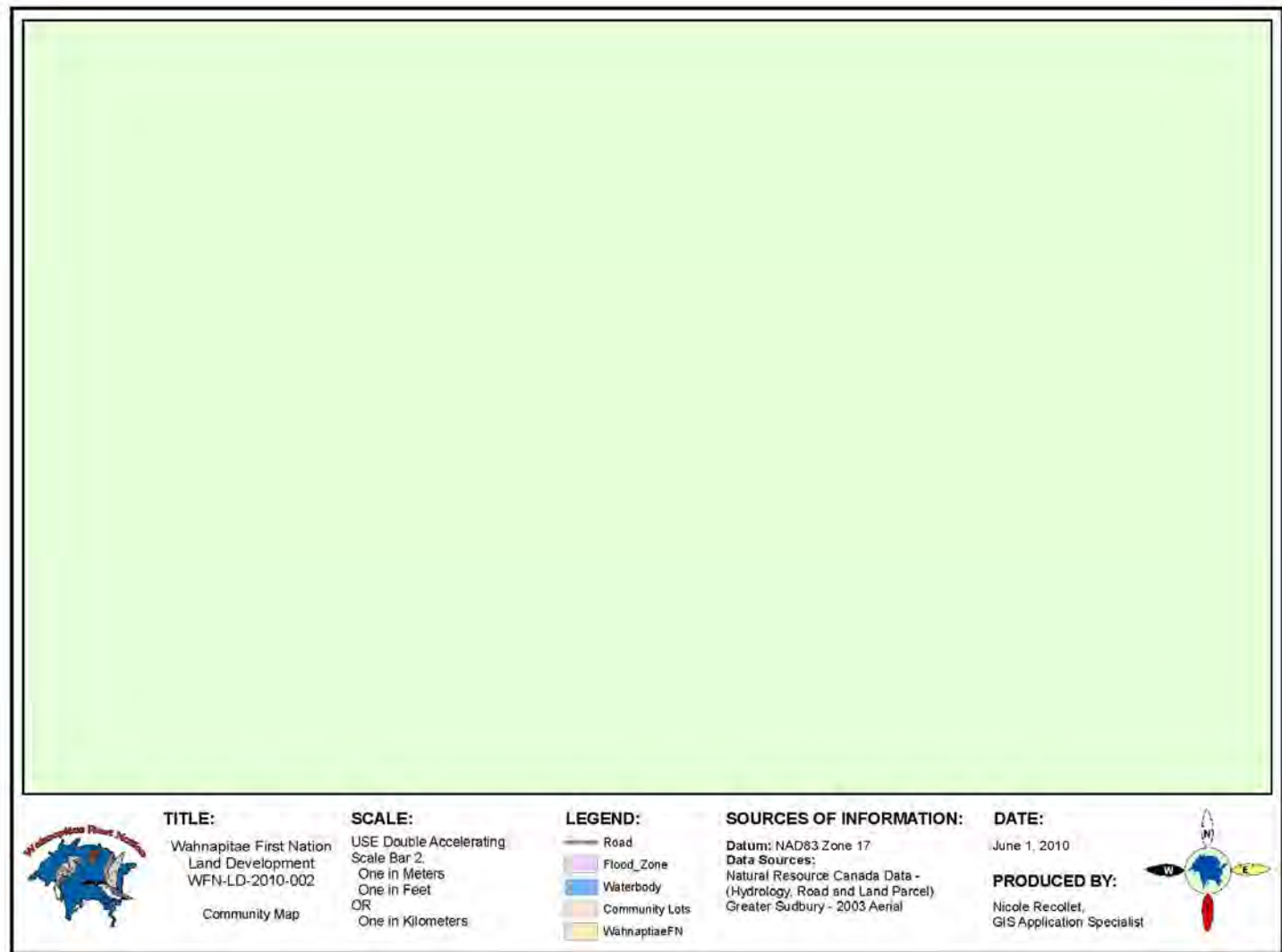
GEOGRAPHIC INFORMATION SYSTEMS (GIS)  
OPERATIONAL MANUAL v.2,  
MAY 2011

Nicole Recollet, GIS Applications Specialist

## TABLE OF CONTENTS:

1.0	Geographic Information Systems Background .....	3
2.0	Geographic Information System Software & licensing .....	5
3.0	GIS Data management .....	6
3.1	Data Management .....	6
3.2	Coordinate System .....	6
3.3	File naming protocols .....	6
3.4	Data storage and transfer .....	8
3.5	Data back up procedures .....	9
3.6	Data updates .....	9
4.0	Data Resources .....	9
4.1	Resource links .....	10
5.0	Mapping .....	11
5.1	Map layout .....	11
5.2	Map set .....	12
6.0	Routine GIS Applications .....	12
6.1	CREATING A MAPPING PROJECT .....	12
6.2	ADDING "X" AND "Y" DATA TO A MAP PROJECT .....	15
6.3	Garmin GPS upload convert to GIS Layer .....	16
6.4	Creating a KMZ file for GOOGLE earth .....	18
6.5	How to Add Hyperlinks to spatial features .....	20
6.6	CREATING A LAYOUT AND PRINTING TO PDF .....	22
7.0	Review and Revision .....	23
Appendix a	Data Set .....	24
Appendix B	Map set .....	25

# Standardized Map Layout



# What GIS are we using?

## SOFTWARE:

- ArcMap 10.1 (single user)
  - Spatial Analyst
  - 3D Analyst
- ArcMap 10.1(single user)

## HARDWARE:

- Laptop
- Plotter (HP Design T770)


## DATA:


- WFN Baseline Data.
- LIO
- NRCAN
- Partners



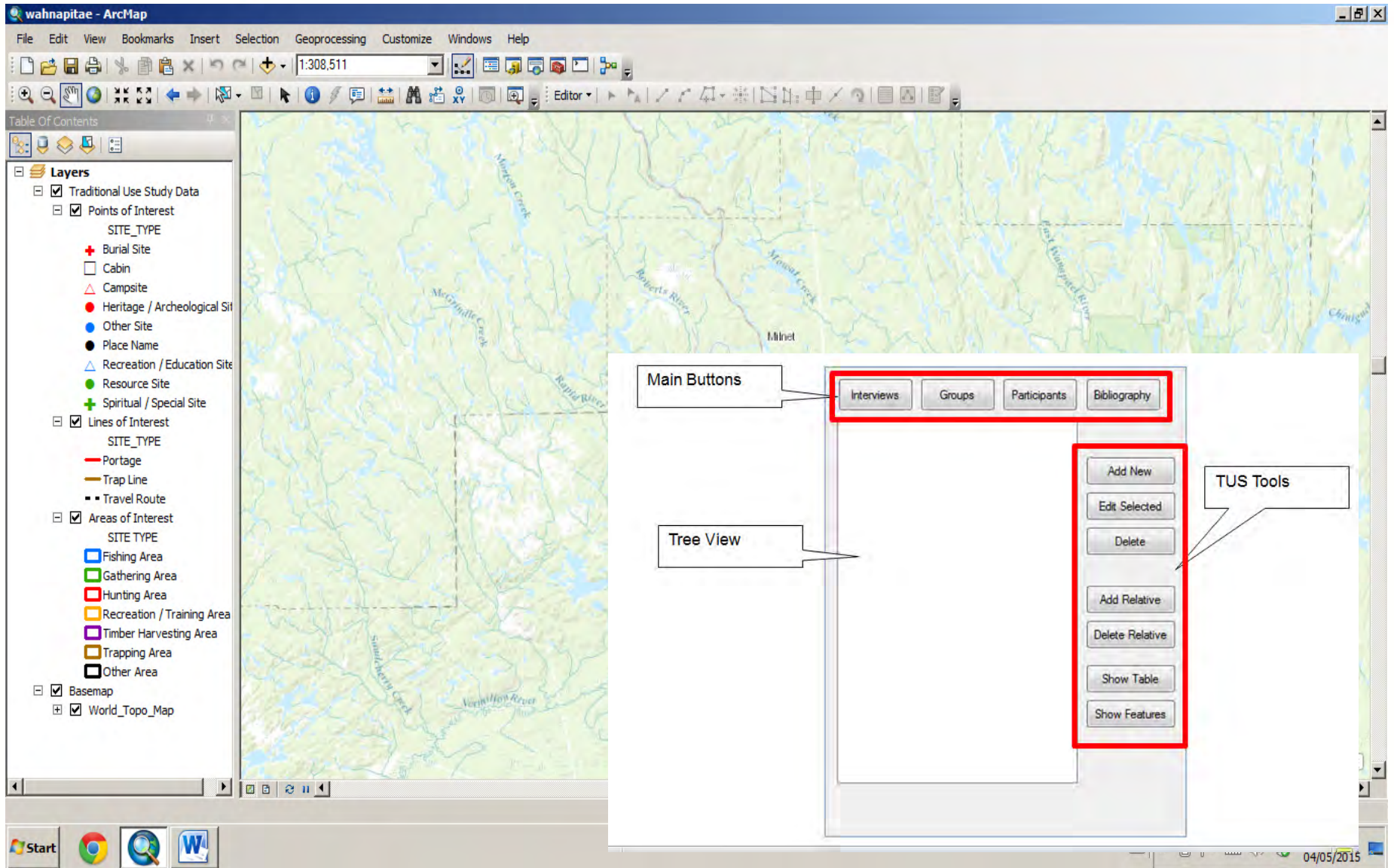


# TUS User Guide

	TUS USER GUIDE
<b>Table of Contents</b>	
1.0 GETTING STARTED	3
1.1 Installation and Setup	3
1.2 Key Concepts	4
1.3 Important Notes	4
1.4 The TUS Dockable Window	5
1.5 Expected Workflows	7
1.5.1 One-on-One Interviewing	7
1.5.2 Group Interviewing	7
1.5.3 Searching	8
2.0 WORKING WITH INTERVIEWS	9
2.1 Add New Interview	9
2.2 Edit or Update an Existing Interview	9
2.3 Delete an Existing Interview	9
2.4 Show the Interview Table	10
3.0 WORKING WITH PARTICIPANTS	10
3.1 Add a New Participant	10
3.2 Edit or Update an Existing Participant	10
3.3 Delete an Existing Participant	11
3.4 Add a Relative	11
3.5 Delete an Existing Relative	12
3.6 Show the Participant Table	12
3.7 Show the Feature Tables	12
4.0 WORKING WITH GROUPS	13
4.1 Add a New Group	13
4.2 Edit or Update an Existing Group	13
4.3 Delete an Existing Group	13
4.4 Show the Group Table	14
5.0 WORKING WITH BIBLIOGRAPHIES	15

	TUS USER GUIDE
5.1 Add a New Bibliography	15
5.2 Edit or Update an Existing Bibliography	15
5.3 Delete an Existing Bibliography	15
6.0 WORKING WITH MAP FEATURES	16
6.1 During an Edit Session	17

# TUS Database



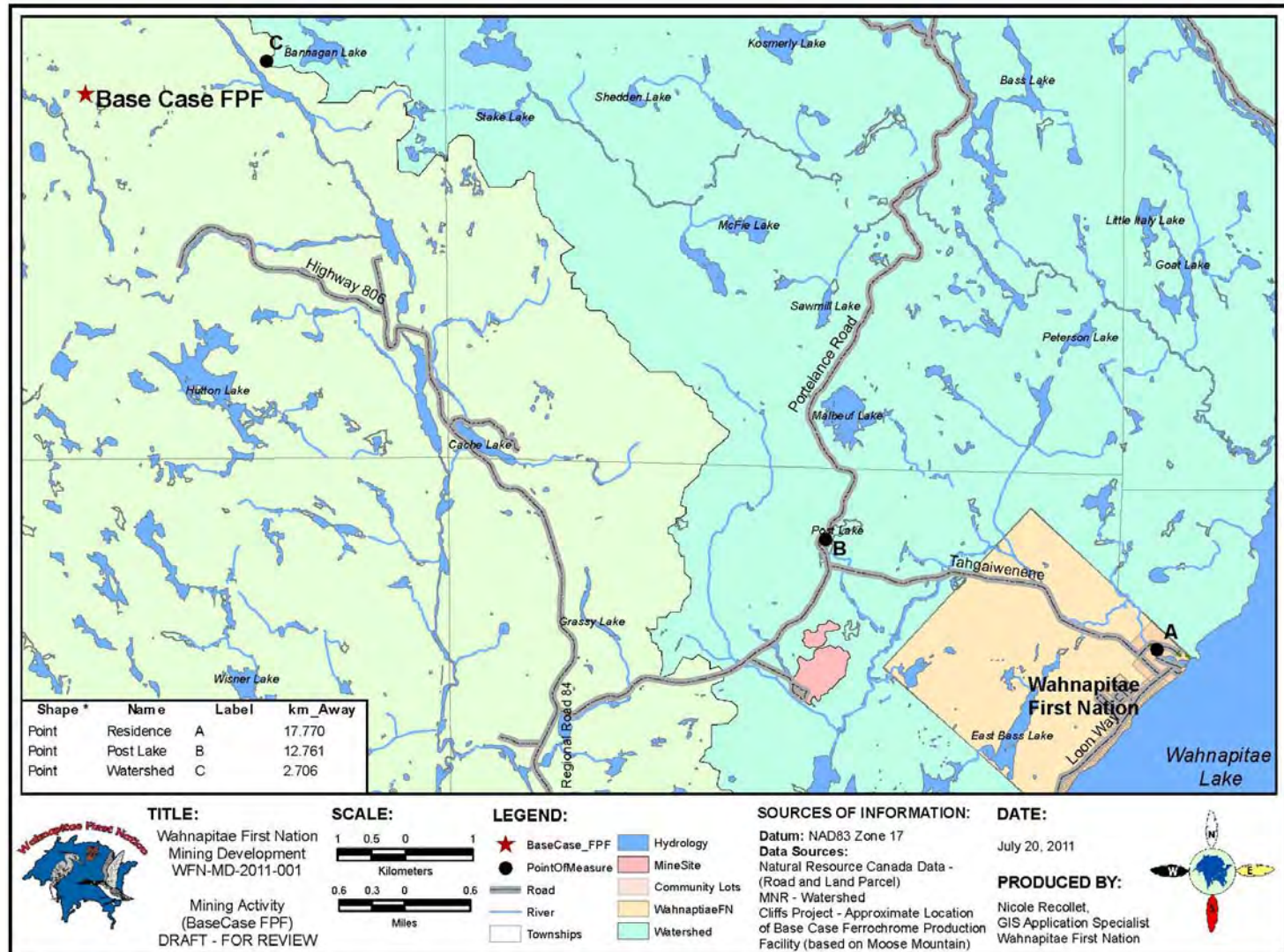


# TUS Tools

Add New	Add new records to the interviews, participants, groups and bibliography tables
Edit Selected	Update the currently selected interview, participant, group and bibliography in the tree view
Delete	Delete the currently selected interview, participant, group and bibliography in the tree view
Add Relative	Adds a record to the Relative table for the selected participant
Delete Relative	Removes a record to the Relative table for the selected participant
Show Table	Opens the table associated with the selected interview, participant, group and bibliography in the tree view Use the table window to access attachments
Show Features	Opens the Point, Line, and Polygon tables associated with the selected interview, participant, group and bibliography in the tree view



# Environmental Assessment: TEK





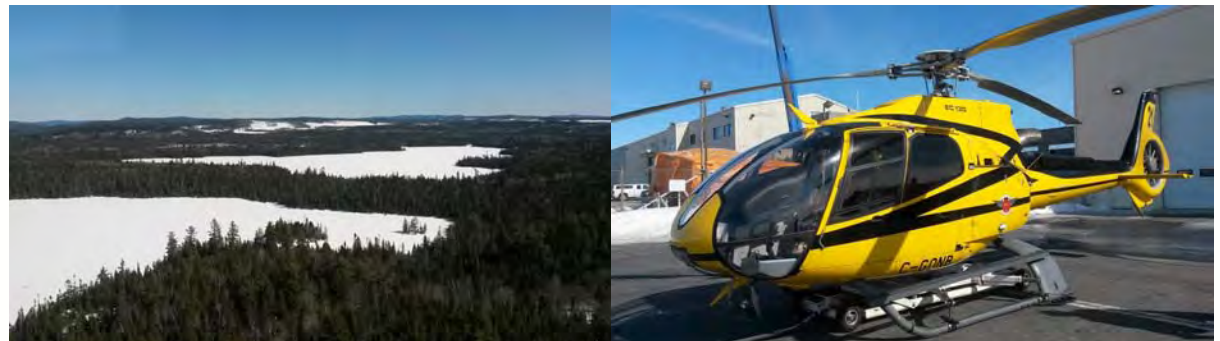
# Forest Management Plan (FMP)

## Native Values Monitoring – FMP

Updated Native Values Report to the MNR so that it can be integrated into the Forest Management Planning process.

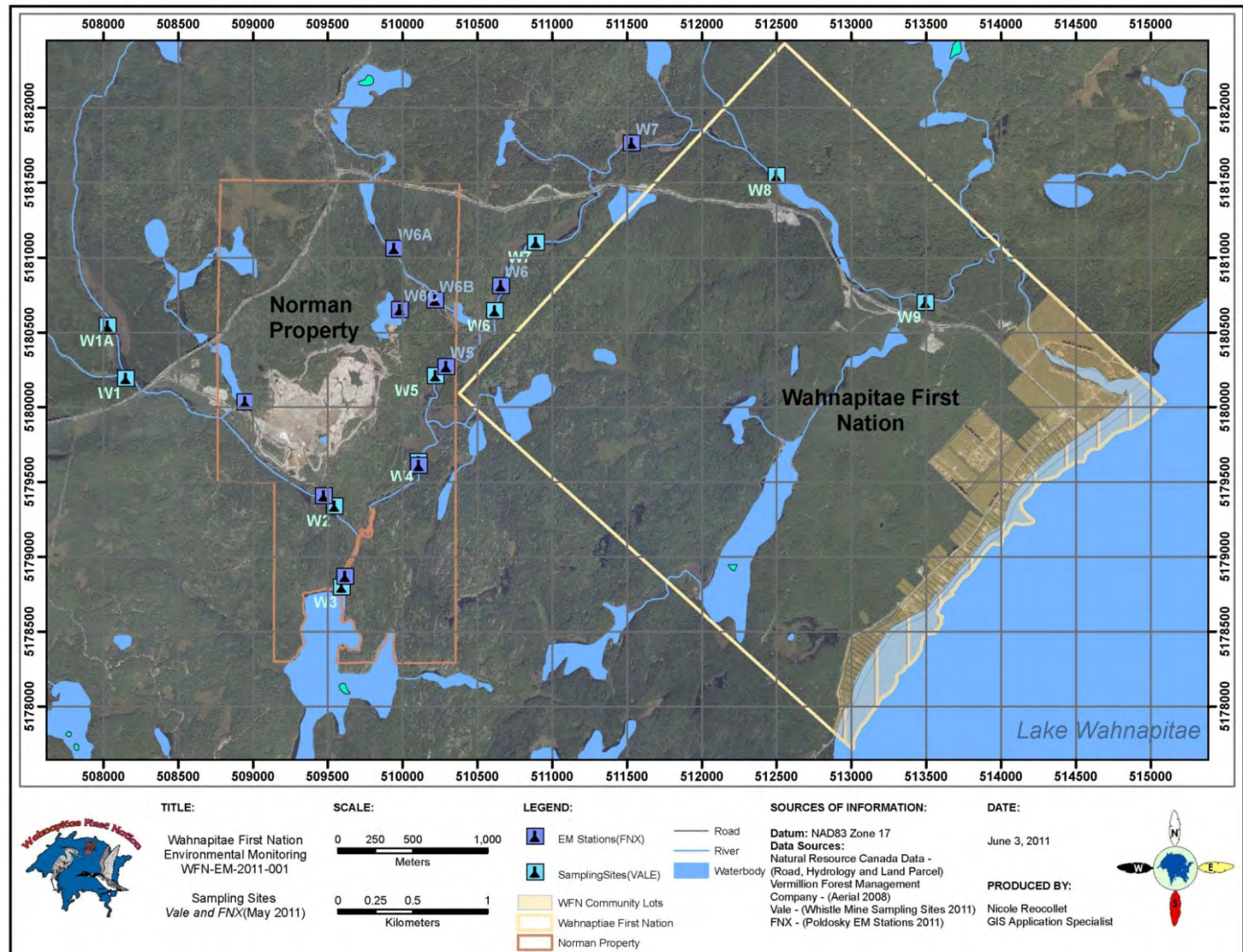
Reviewed identified forestry protection prescriptions for our native values.

Completed helicopter fly over and drop in to identify potential impacts to our native values.





# Environmental Monitoring





# Baseline Data Collection





# Eco Site Land Classification

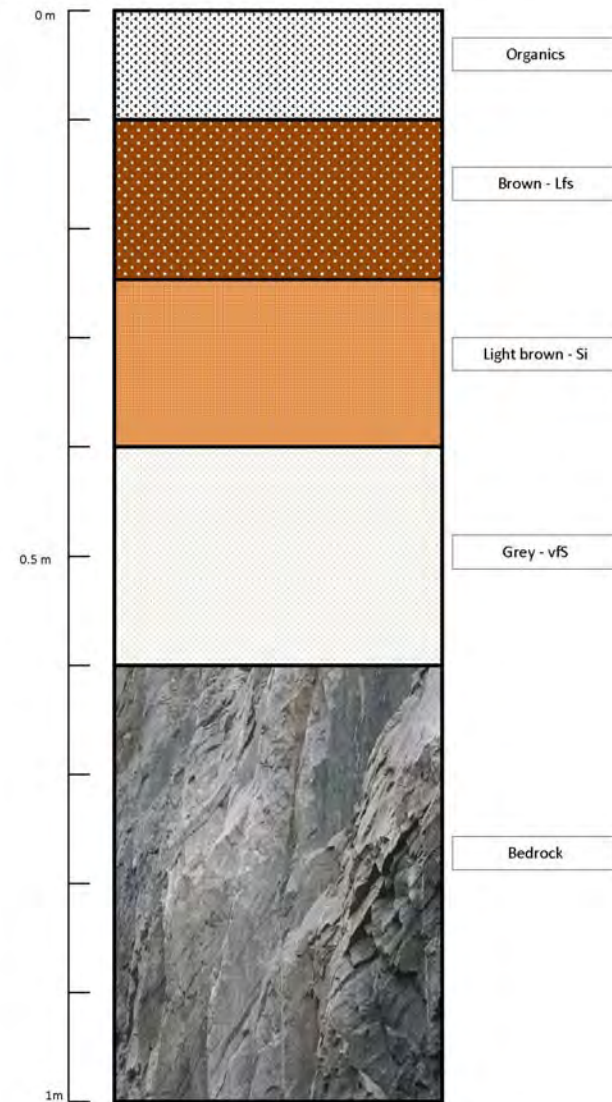


Photo  
Monitoring



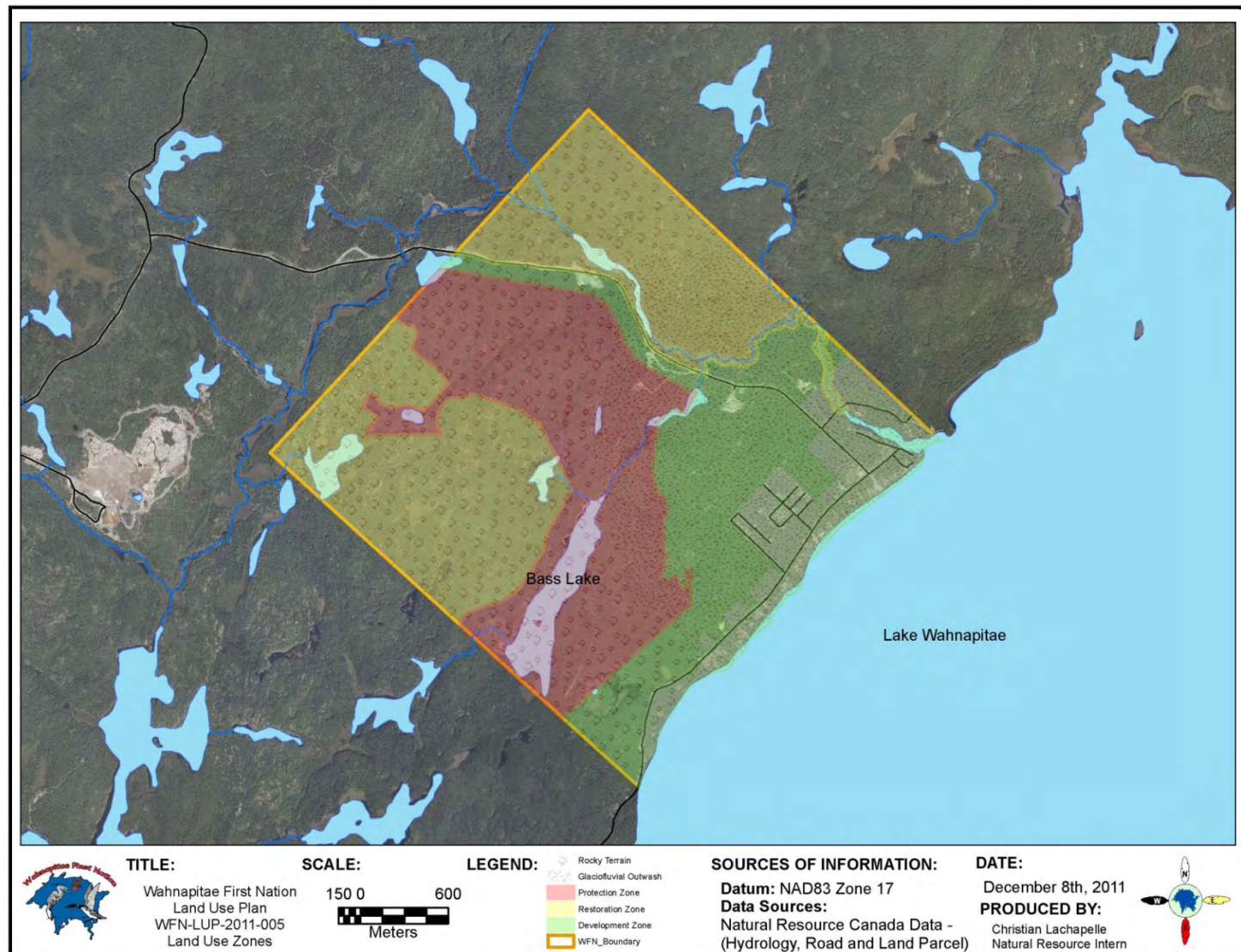
Soil  
Profile

ELC001 – soil pit





# Land Use Planning



**TITLE:**  
Wahnapitae First Nation  
Land Use Plan  
WFN-LUP-2011-005  
Land Use Zones

**SCALE:**  
150 0 600  
Meters

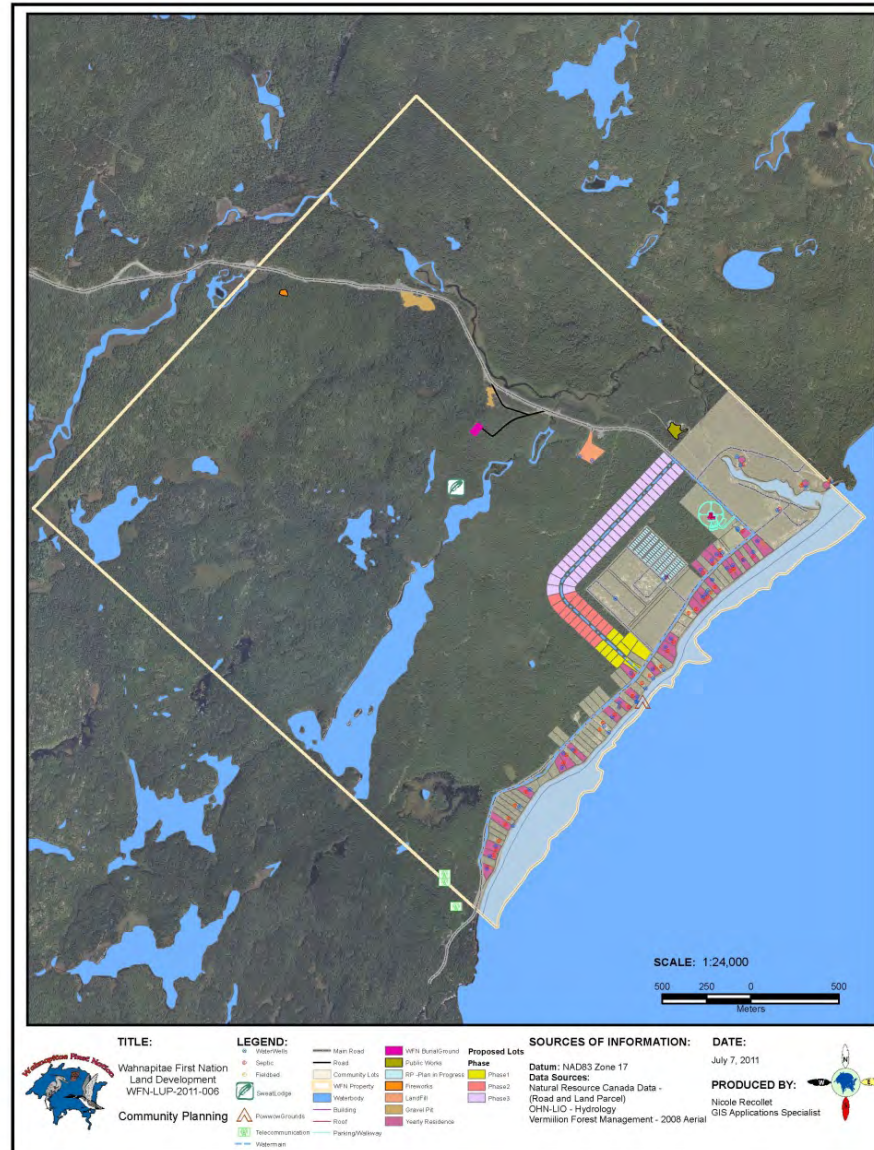
**LEGEND:**  
Rocky Terrain  
Glaciofluvial Outwash  
Protection Zone  
Restoration Zone  
Development Zone  
WFN\_Boundary

**SOURCES OF INFORMATION:**  
**Datum:** NAD83 Zone 17  
**Data Sources:**  
Natural Resource Canada Data -  
(Hydrology, Road and Land Parcel)

**DATE:**  
December 8th, 2011  
**PRODUCED BY:**  
Christian Lachapelle  
Natural Resource Intern



# Land Use Planning





# Youth Engagement



## TITLE:

Wahnapitae First Nation  
Land Development  
WFN-LUP-2011-007

Kids Science Camp  
August 2011

## SCALE:

1:23,000

0 250 500  
Meters

## LEGEND:

- Our Community Planning
- WFN Boundary
- Community Lots

## Forestry Camp

- BIRCH
- REDPINE
- SPRUCE
- WHITE PINE



Our Gazebo - SketchUp

## SOURCES OF INFORMATION:

Datum: NAD83 Zone 17

### Data Sources:

Natural Resource Canada Data -  
(Road and Land Parcel)  
Greater Sudbury - 2003 Aerial  
WFN Kids - (Forestry, Gazebo and  
Community Recreation Facilities)

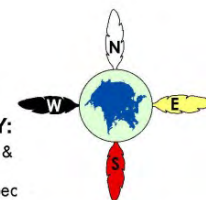
Download Google Earth and Google  
Sketch up for Free on the Internet

## DATE:

August 3, 2011

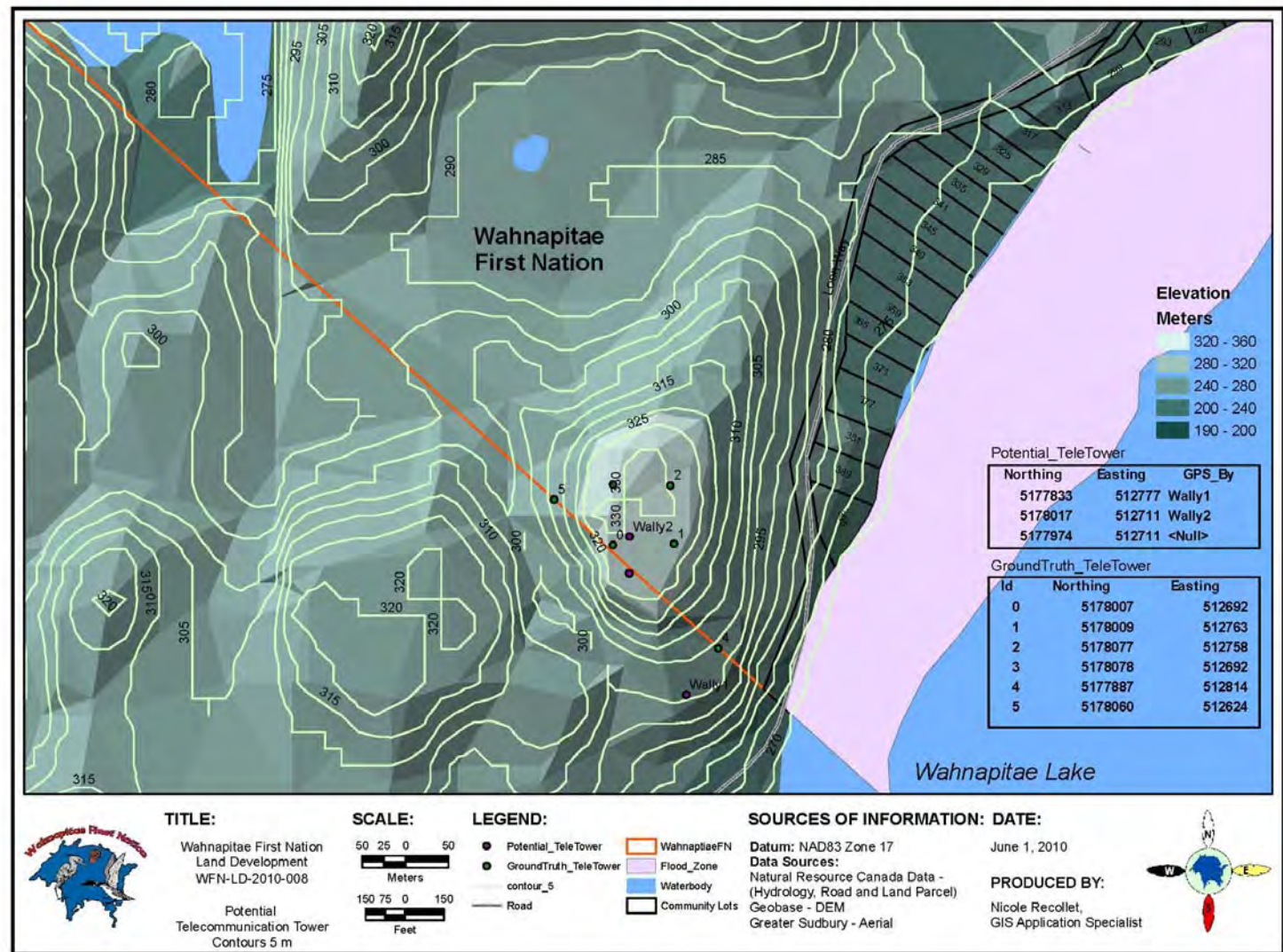
## PRODUCED BY:

WFN Kids Program &  
Nicole Recollet,  
GIS Applications Spec





# Infrastructure

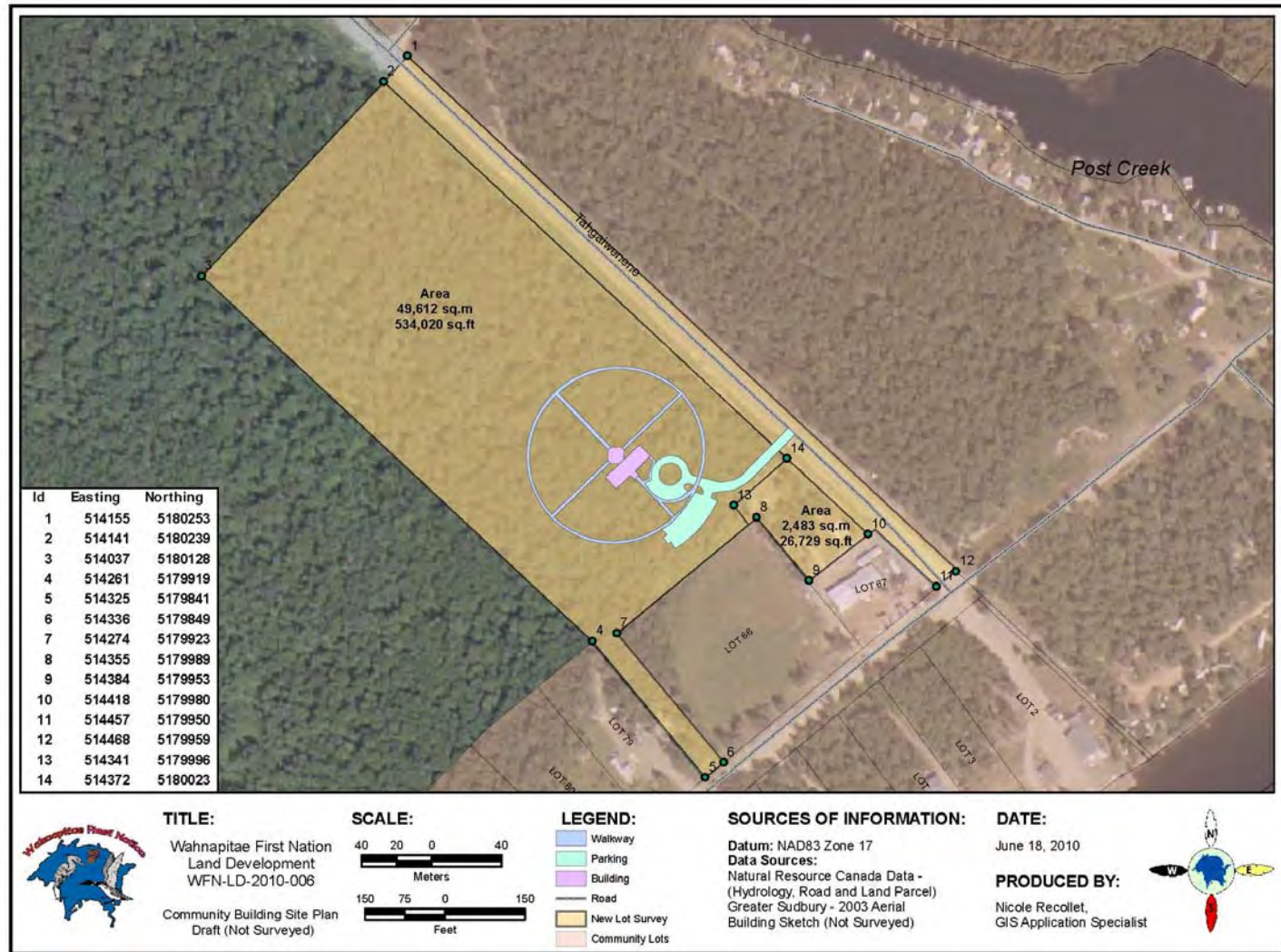


# Line of Sight



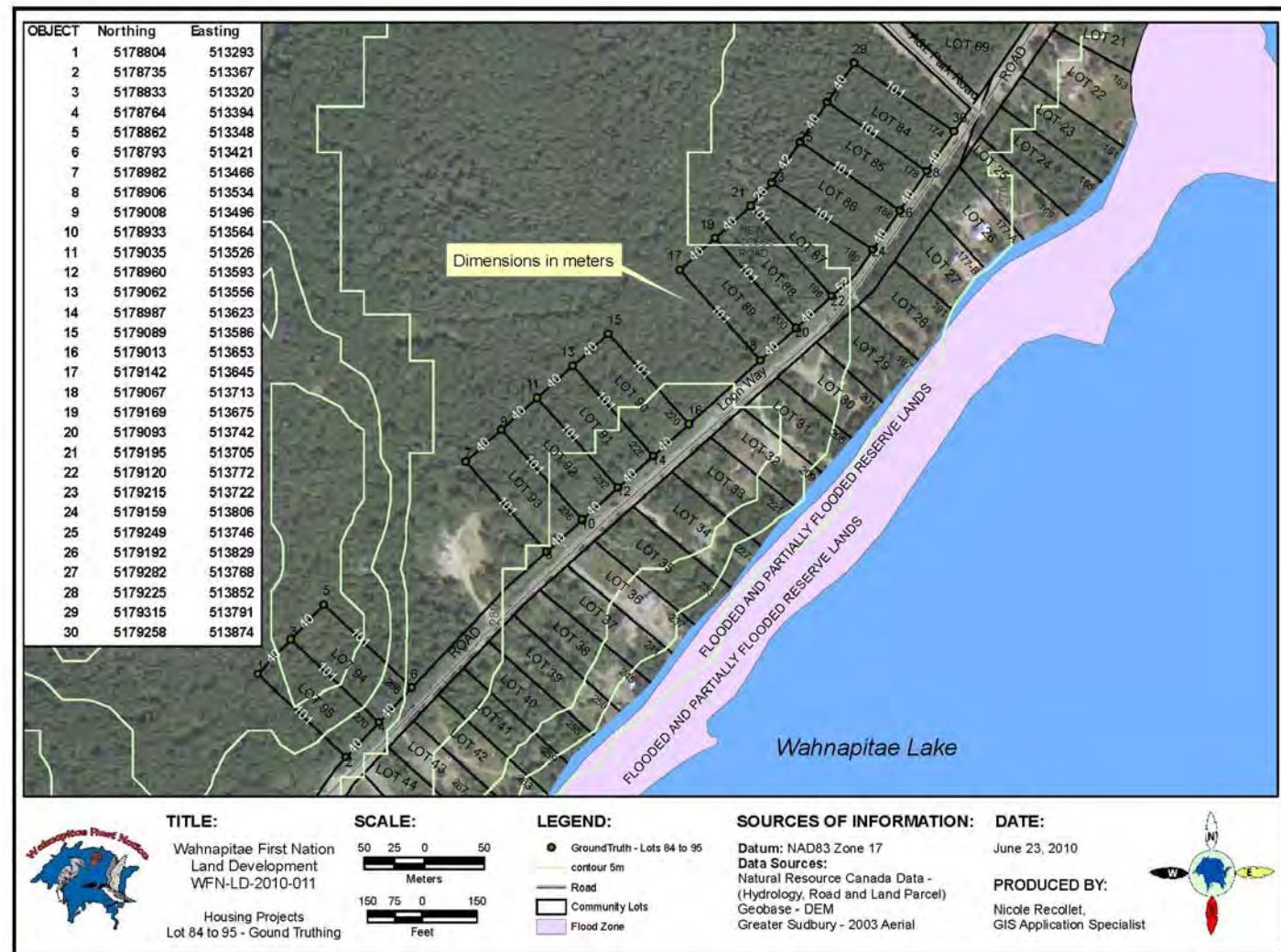


# Centre of Excellence



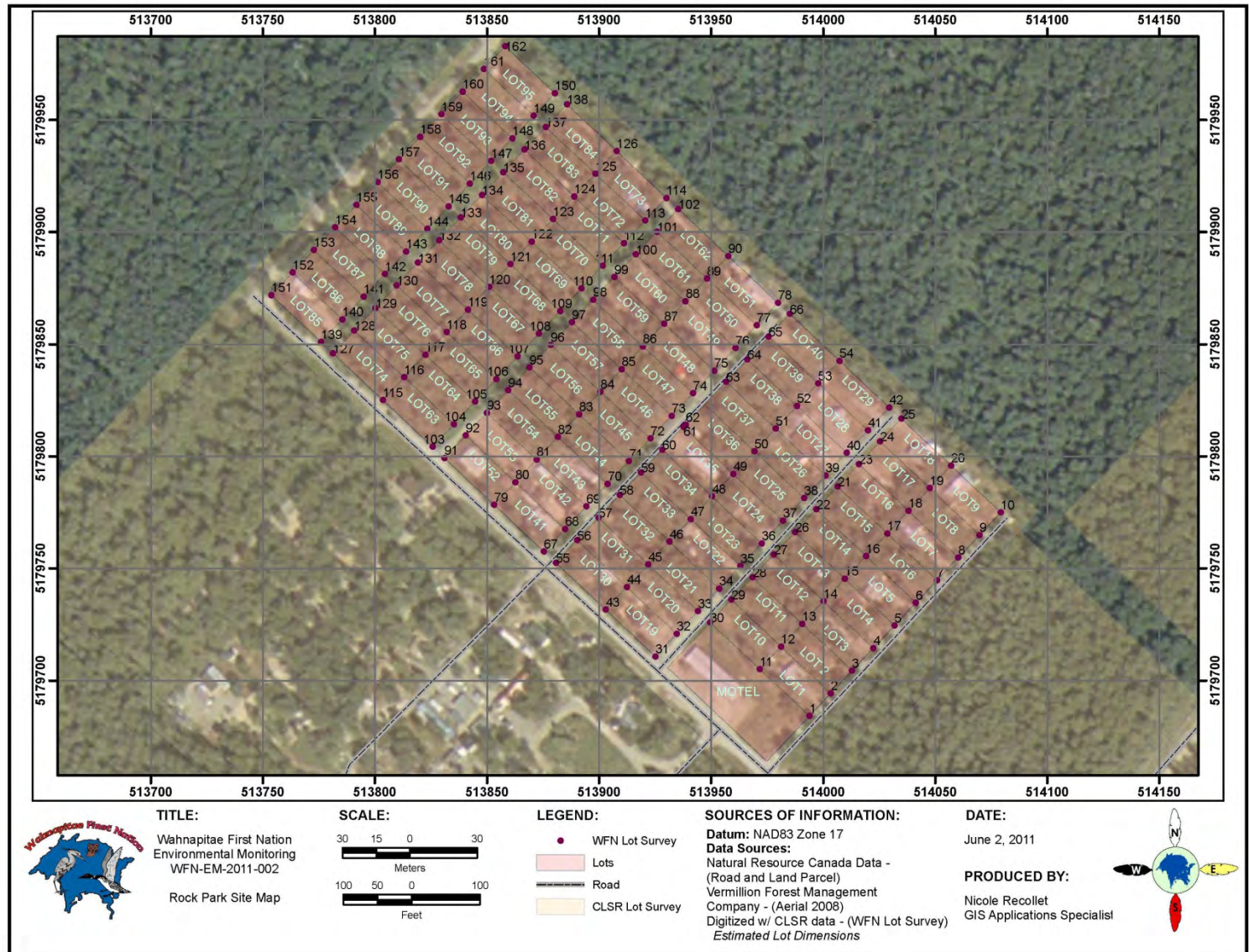


# Housing

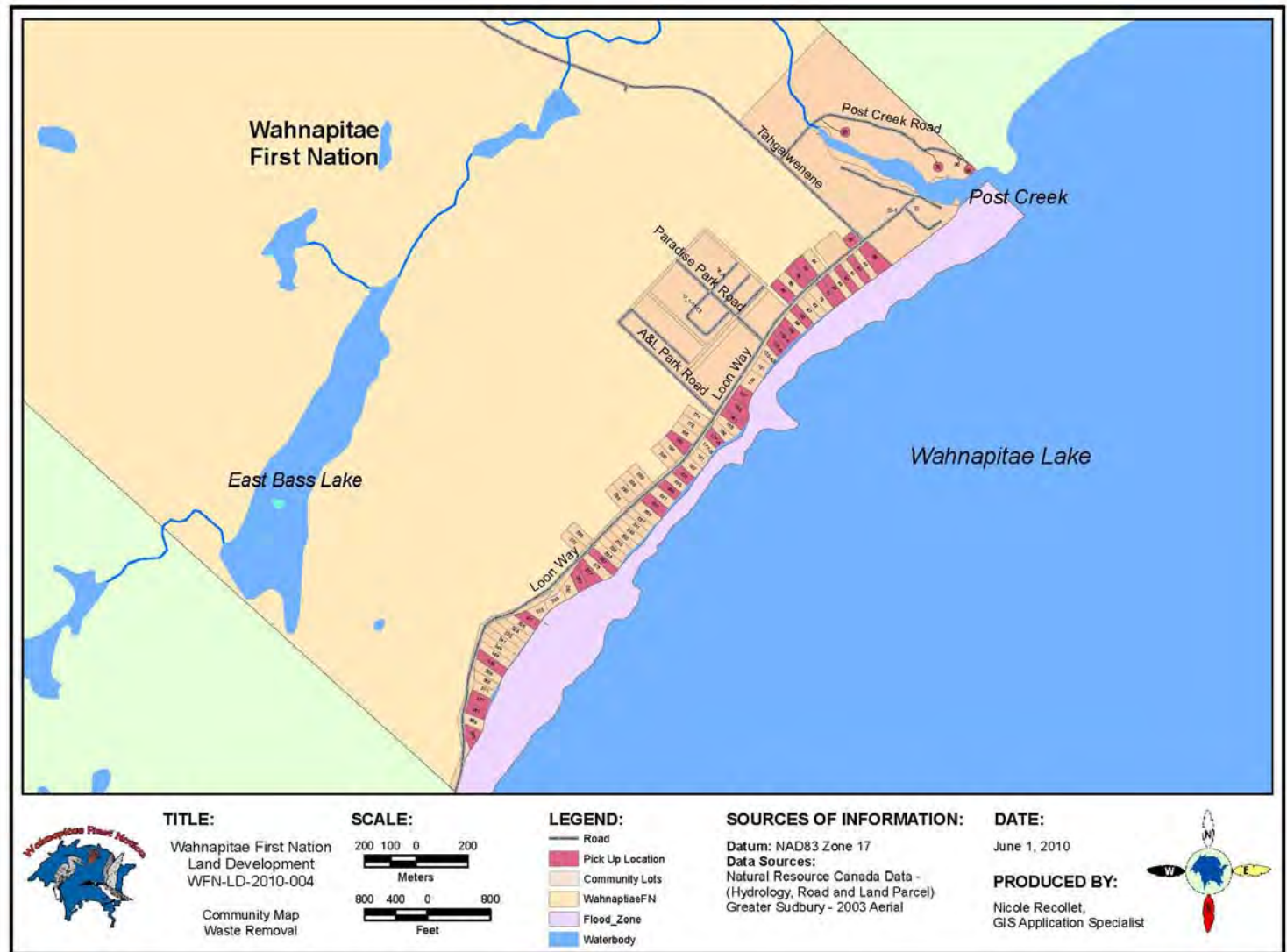




# Campground Management

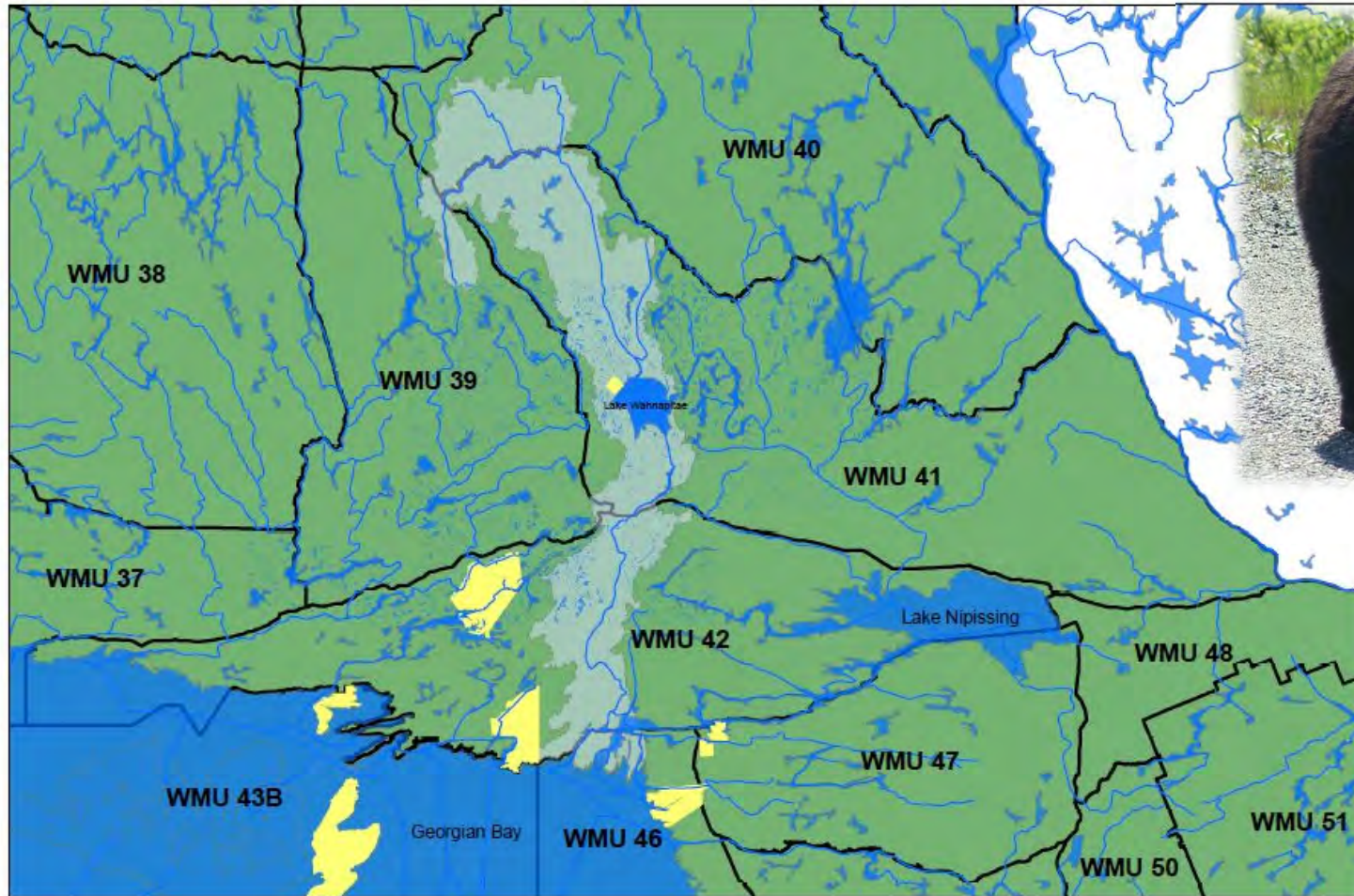


# Waste Diversion





# Biodiversity (web-based)



**TITLE:**  
Wabigoon First Nation  
Traditional  
WMU-TR-2011-002  
Wildlife Management Units

**SCALE:**  
0 5 10 20 30 40  
Kilometers

**LEGEND:**  
Reserves  
Traditional Use Area  
WMU

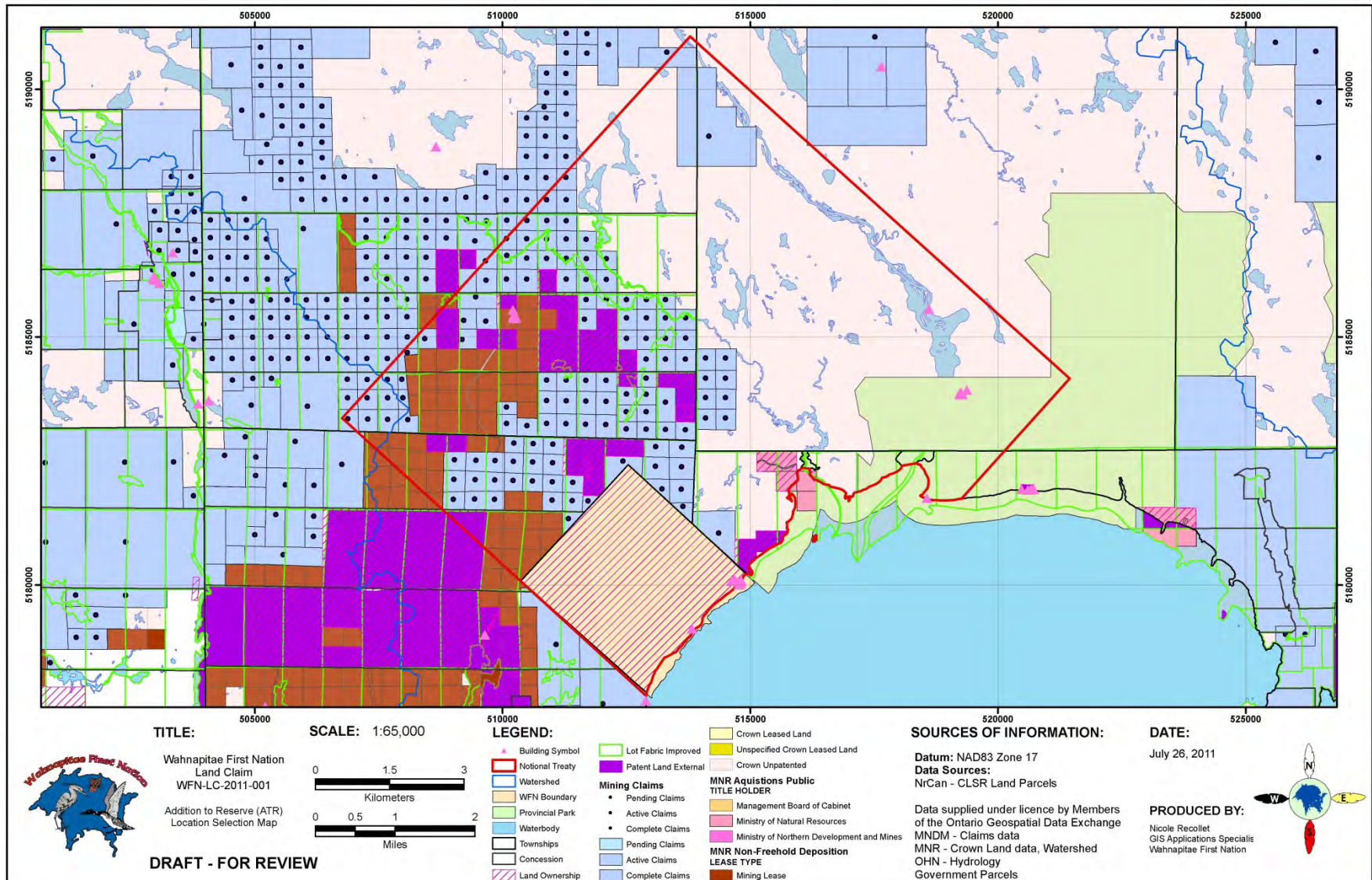
**SOURCES OF INFORMATION:**  
Datum: NAD83 Zone 17  
Data Sources:  
Natural Resource Canada Data -  
(Hydrology, Road and Land Parcel)  
Land Information Ontario Data (Reserves, WMU)

**DATE:**  
August 31st, 2011  
**PRODUCED BY:**  
Christian Lachapelle  
Natural Resource Intern



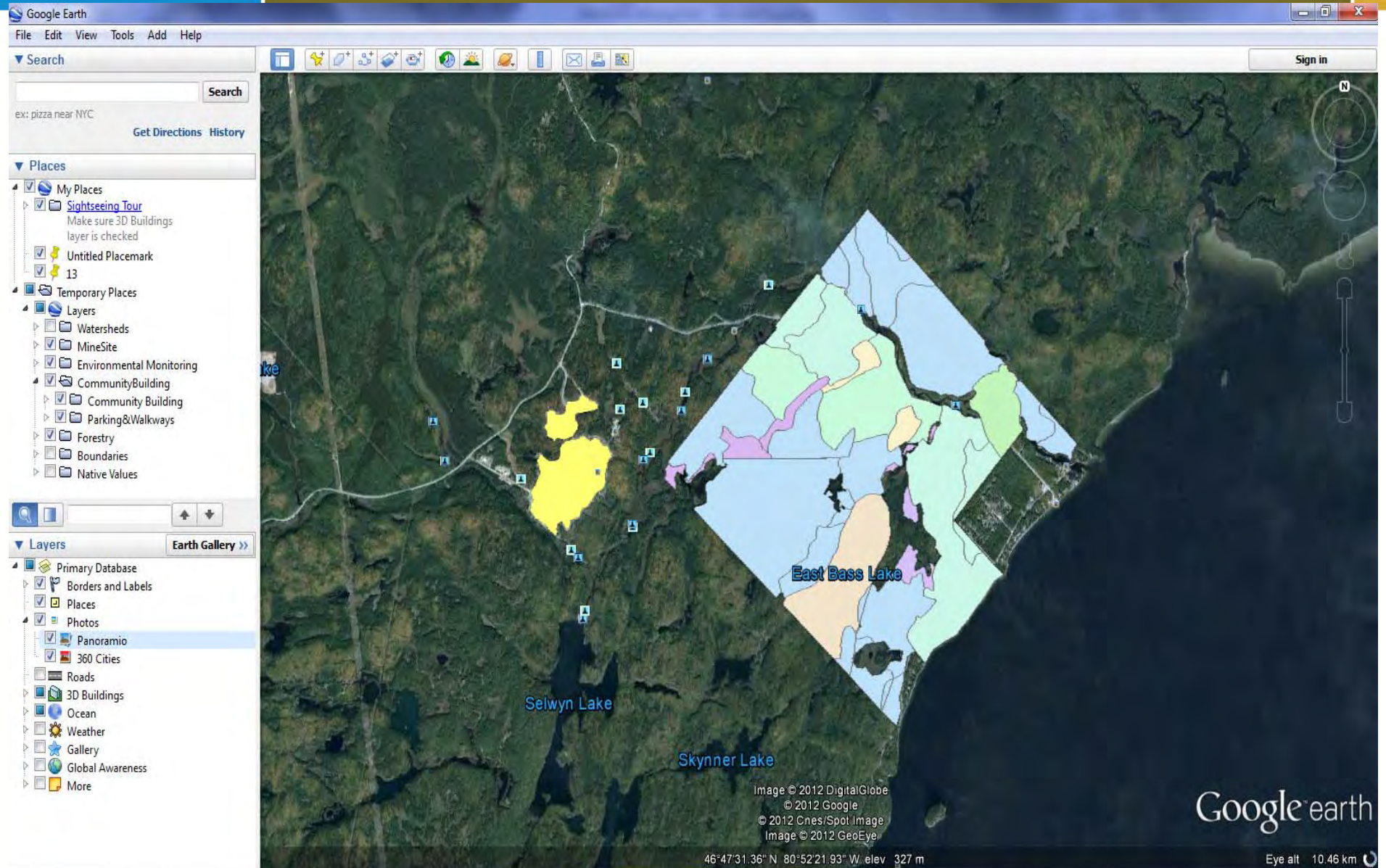


# Land Claim Analysis



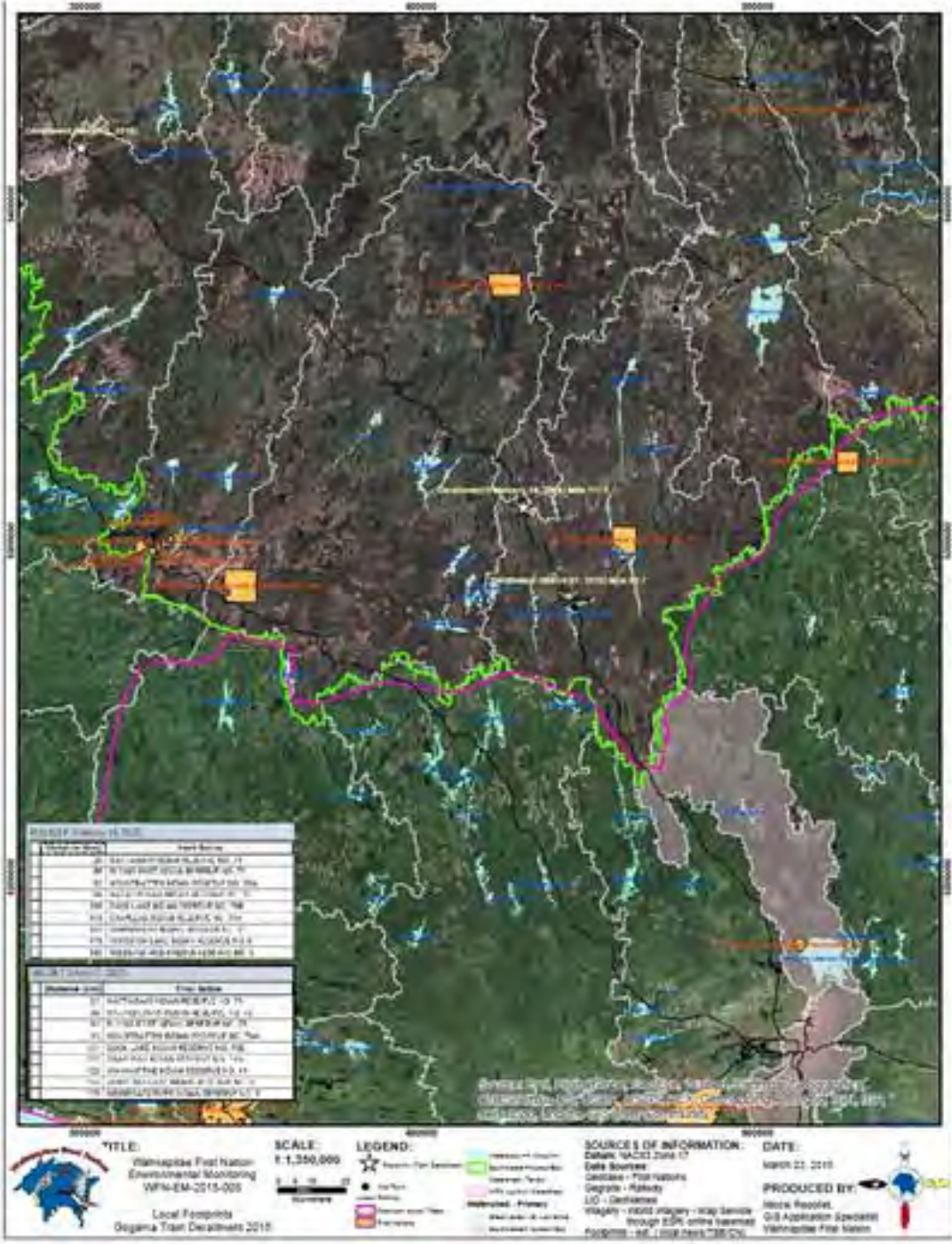


# Google Earth Platform: KMZ



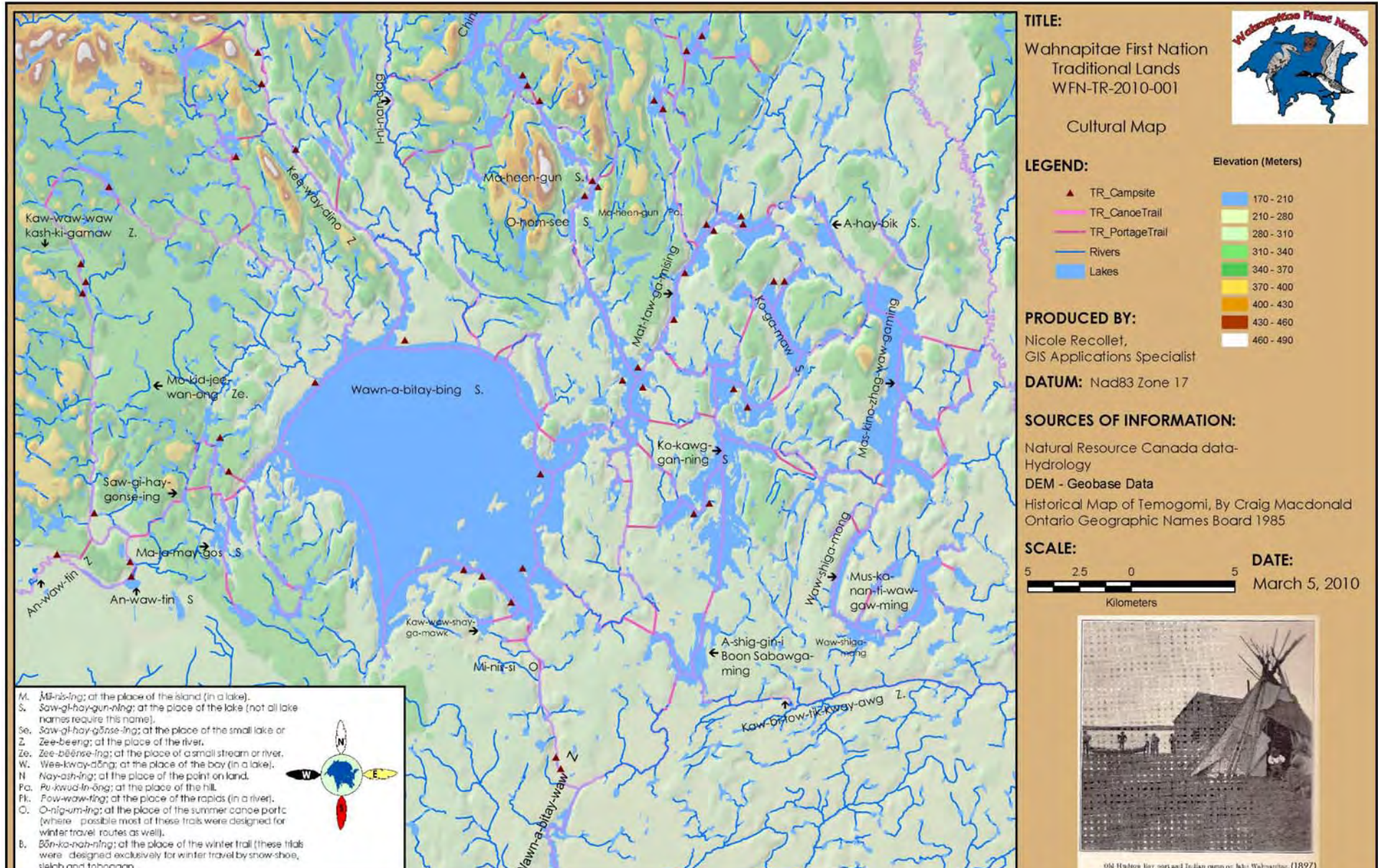


# Train Derailments



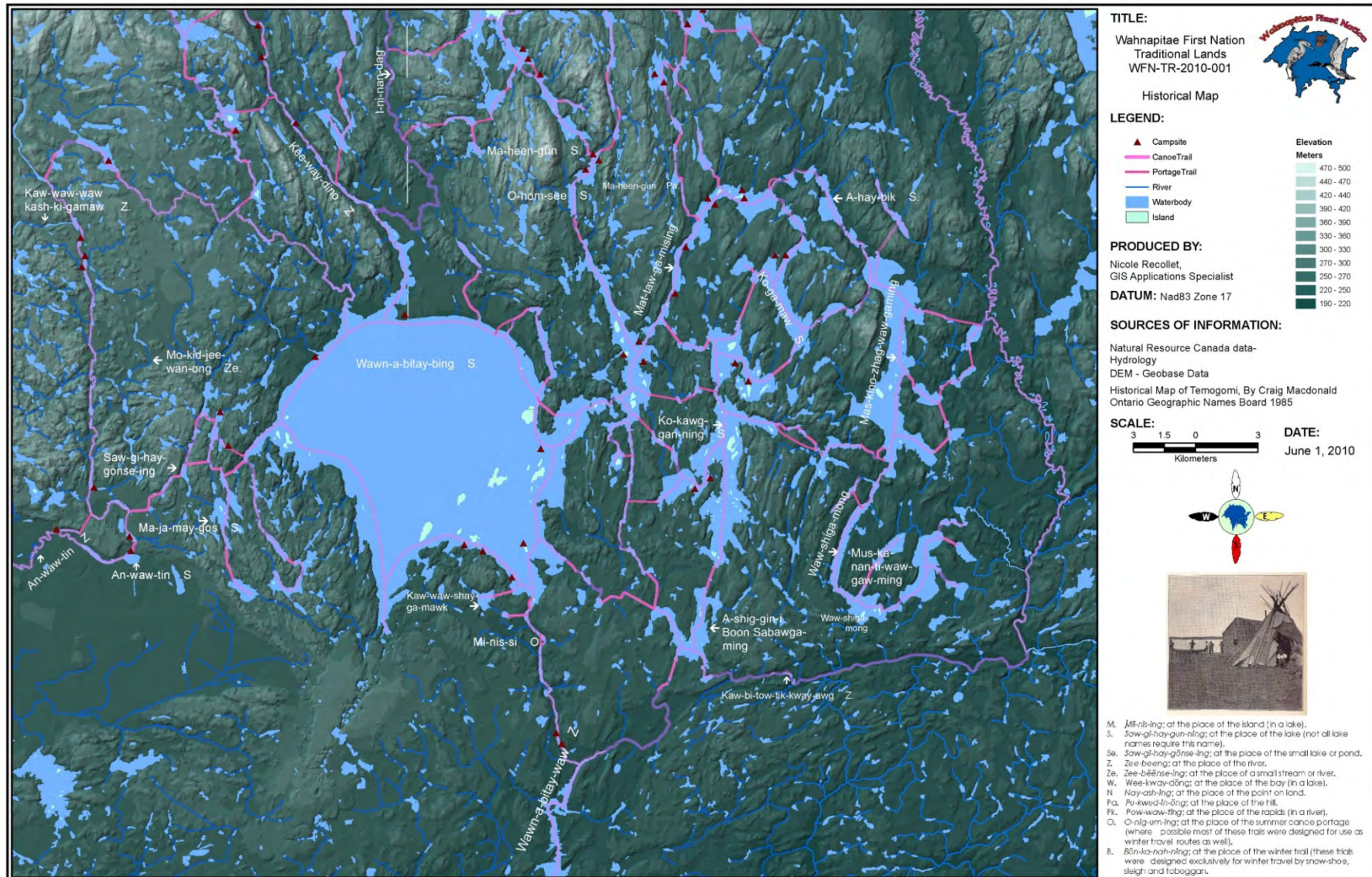


# Historic Campsites and Canoe Routes:



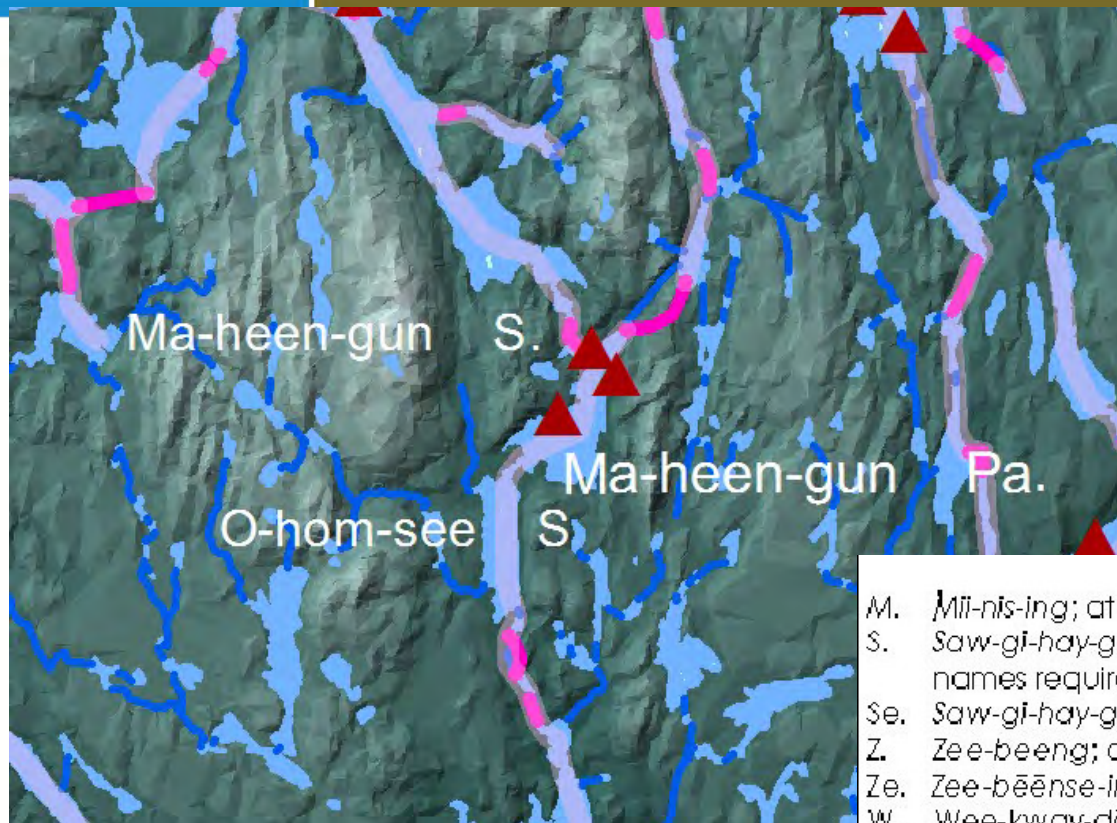


# Historic Campsites and Canoe Routes:





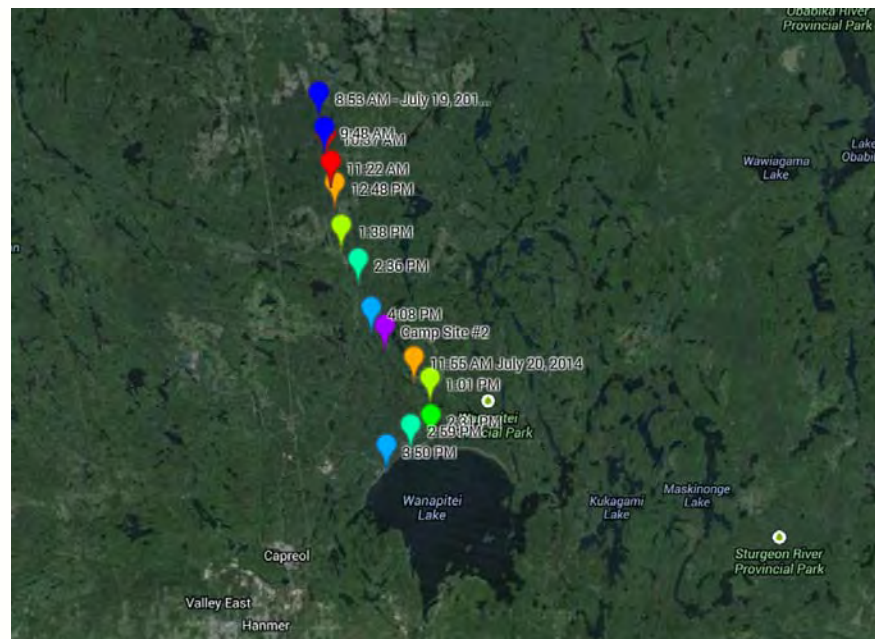
# Historic Campsites and Canoe Routes



- M. *Mii-nis-ing*; at the place of the island (in a lake).
- S. *Saw-gi-hay-gun-ning*; at the place of the lake (not all lake names require this name).
- Se. *Saw-gi-hay-gōnse-ing*; at the place of the small lake or pond.
- Z. *Zee-beeng*; at the place of the river.
- Ze. *Zee-bēense-ing*; at the place of a small stream or river.
- W. *Wee-kway-dōng*; at the place of the bay (in a lake).
- N. *Nay-ash-ing*; at the place of the point on land.
- Pa. *Pu-kwud-in-ōng*; at the place of the hill.
- Pk. *Pow-waw-ting*; at the place of the rapids (in a river).
- O. *O-nig-um-ing*; at the place of the summer canoe portage (where possible most of these trails were designed for use as winter travel routes as well).
- B. *Bōn-ka-nah-ning*; at the place of the winter trail (these trails were designed exclusively for winter travel by snow-shoe, sleigh and toboggan).

# Youth Canoe Journeys

- WFN Youth canoe trips
- 2013 & 2014
- To exercise our Use & Occupancy of the land





# Taghaiwinini Technical & Environmental Services Group



GUHINA GDOD AHKNOOB ICHIGOO MEH - WE ARE ALL CONNECTED



**Tahgaiwinini Technical and Environmental Services Group** appreciates our unique relationship with the land and water and recognizes the importance of environmental sustainability, land use and community development. Tahgaiwinini Technical and Environmental Services Group promotes active participation in natural resource management and strives to enhance informed environmental solutions. Tahgaiwinini Technical and Environmental Services Group specializes in providing a wide variety of environmental services for a diverse group of clientele. We are well experienced in working with First Nation communities, government and industry.

## GEOSPATIAL APPLICATIONS

More and more, geospatial analysis is becoming an integral part of environmental management. Geospatial technology is proven to enhance informed decision making. Tahgaiwinini Technical and Environmental Services Group is committed to furthering the development of integrated geospatial solutions for all clients. Geospatial analysis can enhance: Community Development, Land Use Planning, Historical Use and Occupancy Studies, Traditional Ecological Knowledge Management, Public Participation Mapping and a whole slew of infinite applications.

## Types of GIS Applications:

- Customized map document production utilizing cartographic principles and geographic tools.
- Geospatial data management strategies and methods.
- Geospatial analysis for resource management and planning processes including but not limited to: area/volume estimates, land-use analysis, timber supply calculations, watershed analysis, biodiversity analysis cumulative effects analysis, environmental assessments screenings and watershed assessments.
- Innovative geospatial data integration utilizing web mapping platforms and adobe portable document formats (KMZ, PDF).
- Digitizing and scanning hardcopy and historical maps.
- Georeferencing and Digital Elevation Models (DEM).
- Aerial photography interpretation and time lapse projects.
- Remote Sensing – classification study.
- Data Layer Compilation and Resource Search.
- Large scale map printing and plotting.

## ENVIRONMENTAL MANAGEMENT INITIATIVES

- Exploration Support related to prospecting, staking, line cutting and drill site access and rehabilitation
- Environmental monitoring programs (surface water grab samples, groundwater well sampling, manual flow measurements, water quality metre, Levellogger downloads, profiling water channels, photos) using common sampling procedures.
- Baseline data collection using top of the line Ground Positioning Systems (GPS) technology with sub-metre accuracy.
- Employ provincial Ecological Land Classification techniques related to soil profiles and substrates, soil moisture regimes, soil texture, vegetation and tree cover, record incidentals.
- Wetland evaluations.
- Environmental photo monitoring programs.
- Woodlot Assessment and Management Planning.
- Treemarking assessment and analysis.

## First Nation Awareness Programs

- Customized First Nation awareness training for industry/governments and other organizations.

## PROFESSIONAL TEAM

Tahgaiwinini Technical and Environmental Services Group is a professional group that has specialized and accredited knowledge in First Nation land management regimes, environmental assessment practices, forestry and wildlife management systems, applied geospatial management. Individuals on our team have professional designations and have been certified by the Canadian Environmental Certification Approvals Board.



GUHINA GDOD AHKNOOB ICHIGOO MEH - WE ARE ALL CONNECTED



## CONTACT

Cheryl Recollet, MSc, EP,  
Environmental Coordinator  
Wahnapiitae First Nation  
36 Loon Way Road, WFN  
Capreol, Ontario, Canada P0M1H0  
cheryl.recollet@wahnapiitaefn.com

[www.wahnapiitaefirstnation.com](http://www.wahnapiitaefirstnation.com)

Tahgaiwinini Technical and Environmental Services Group is a division of Wahnapiitae First Nation.

[www.wahnapiitaefirstnation.com](http://www.wahnapiitaefirstnation.com)

Tahgaiwinini Technical and Environmental Services Group is a division of Wahnapiitae First Nation.